



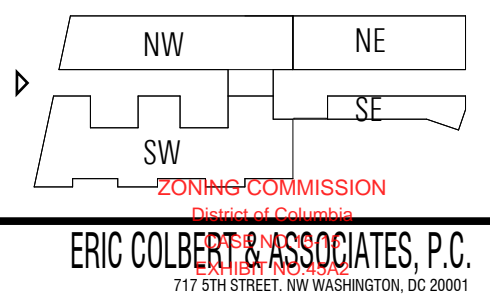
SHEET REVISED 06/02/2016

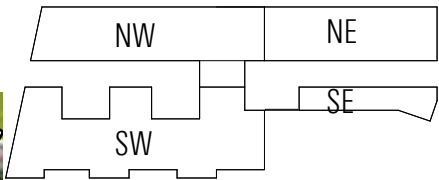
ECKINGTON YARDS WEST | PERSPECTIVE @ ECKINGTON PLACE, NE

A2.01 | PRE-HEARING SUBMISSION
02 / 05 / 2016

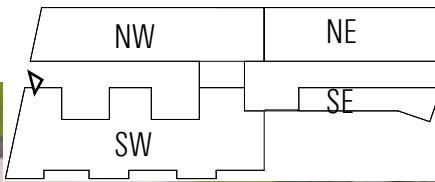
ECKINGTON YARDS | EAST + WEST
1611-1625 ECKINGTON PLACE + 1500 HARRY THOMAS WAY, NE WASHINGTON DC 20002

BOUNDARY COMPANIES + JBG
4445 WILLARD AVENUE, SUITE 400 BETHESDA MD 20815





ECKINGTON YARDS WEST | AERIAL VIEW @ ECKINGTON PLACE, NE



SHEET REVISED 06/02/2016

ECKINGTON YARDS WEST | AERIAL VIEW

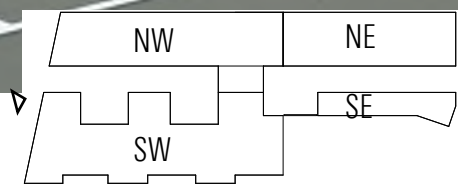
A2.03 | PRE-HEARING SUBMISSION
02 / 05 / 2016

ECKINGTON YARDS | EAST + WEST
1611-1625 ECKINGTON PLACE + 1500 HARRY THOMAS WAY, NE WASHINGTON DC 20002

BOUNDARY COMPANIES + J B G
4445 WILLARD AVENUE, SUITE 400 BETHESDA MD 20815

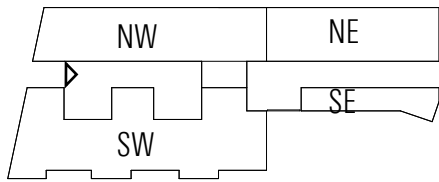
LANDDESIGN, INC.
200 S. PEYTON STREET ALEXANDRIA, VA 22314

ERIC COLBERT & ASSOCIATES, P.C.
717 5TH STREET. NW WASHINGTON, DC 20001

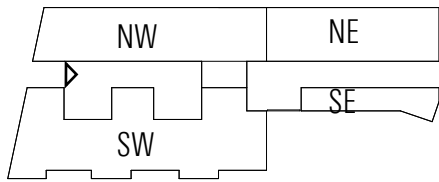


SHEET REVISED 06/02/2016

ECKINGTON YARDS WEST | STREET VIEW @ ECKINGTON PLACE, NE



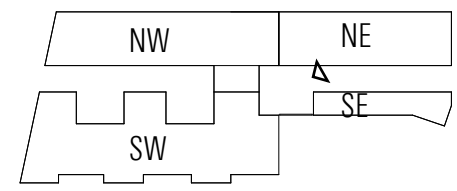
ECKINGTON YARDS WEST | PERSPECTIVE @ RETAIL PROMENADE



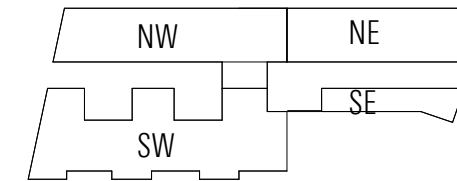
ILLUSTRATING VEHICLES ON PROMENADE

SHEET REVISED 06/02/2016

ECKINGTON YARDS WEST | PERSPECTIVE @ RETAIL PROMENADE



ECKINGTON YARDS WEST | VIEW OF PLAZA



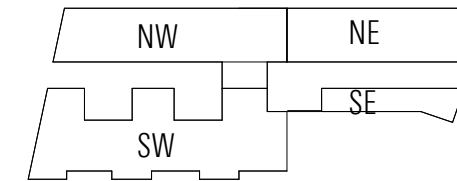
ECKINGTON YARDS WEST | PERSPECTIVE @ HARRY THOMAS WAY, NE

A2.11 | PRE-HEARING SUBMISSION
02 / 05 / 2016

ECKINGTON YARDS | EAST + WEST
1611-1625 ECKINGTON PLACE + 1500 HARRY THOMAS WAY, NE WASHINGTON DC 20002

BOUNDARY COMPANIES + J B G
4445 WILLARD AVENUE, SUITE 400 BETHESDA MD 20815

ERIC COLBERT & ASSOCIATES, P.C.
717 5TH STREET, NW WASHINGTON, DC 20001



CAFE
VERSION

PHOTO: J. B. G. 06/02/2016

SHEET REVISED 06/02/2016

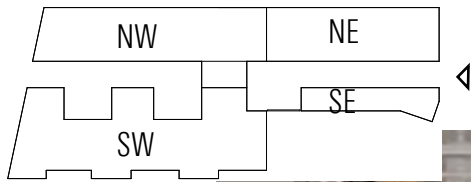
ECKINGTON YARDS WEST | PERSPECTIVE @ HARRY THOMAS WAY, NE

A2.11A | PRE-HEARING SUBMISSION
06/02/2016

ECKINGTON YARDS | EAST + WEST
1611-1625 ECKINGTON PLACE + 1500 HARRY THOMAS WAY, NE WASHINGTON DC 20002

BOUNDARY COMPANIES + J B G
4445 WILLARD AVENUE, SUITE 400 BETHESDA MD 20815

ERIC COLBERT & ASSOCIATES, P.C.
717 5TH STREET, NW WASHINGTON, DC 20001



SHEET ADDED 06/02/2016

SHEET REVISED 06/02/2016

ECKINGTON YARDS WEST | PERSPECTIVE @ RESIDENTIAL PROMENADE

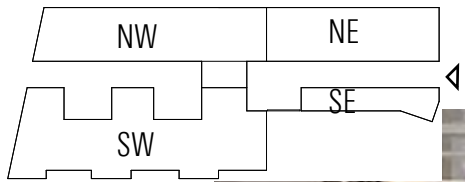
A2.13 | POST-HEARING SUBMISSION
06/02/2016

ECKINGTON YARDS | EAST + WEST
1611-1625 ECKINGTON PLACE + 1500 HARRY THOMAS WAY, NE WASHINGTON DC 20002

BOUNDARY COMPANIES + J B G
4445 WILLARD AVENUE, SUITE 400 BETHESDA MD 20815

LANDDESIGN, INC.
200 S. PEYTON STREET ALEXANDRIA, VA 22314

ERIC COLBERT & ASSOCIATES, P.C.
717 5TH STREET, NW WASHINGTON, DC 20001



CAFE
VERSION

SHEET REVISED 06/02/2016

ECKINGTON YARDS WEST | PERSPECTIVE @ RESIDENTIAL PROMENADE

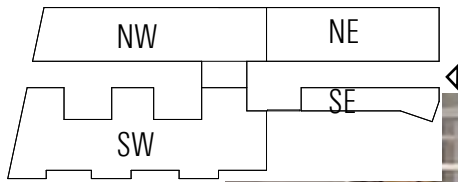
A2.13A | POST-HEARING SUBMISSION
06/02/2016

ECKINGTON YARDS | EAST + WEST
1611-1625 ECKINGTON PLACE + 1500 HARRY THOMAS WAY, NE WASHINGTON DC 20002

BOUNDARY COMPANIES + J B G
4445 WILLARD AVENUE, SUITE 400 BETHESDA MD 20815

LANDDESIGN, INC.
200 S. PEYTON STREET ALEXANDRIA, VA 22314

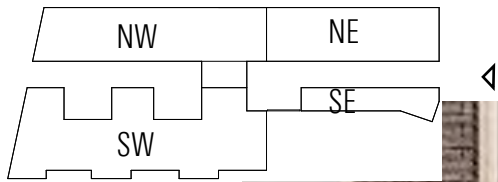
ERIC COLBERT & ASSOCIATES, P.C.
717 5TH STREET, NW WASHINGTON, DC 20001



ILLUSTRATING CAR ON PROMENADE

SHEET REVISED 06/02/2016

ECKINGTON YARDS WEST | PERSPECTIVE @ RESIDENTIAL PROMENADE



SHEET REVISED 06/02/2016

ECKINGTON YARDS WEST | PERSPECTIVE @ RESIDENTIAL PROMENADE

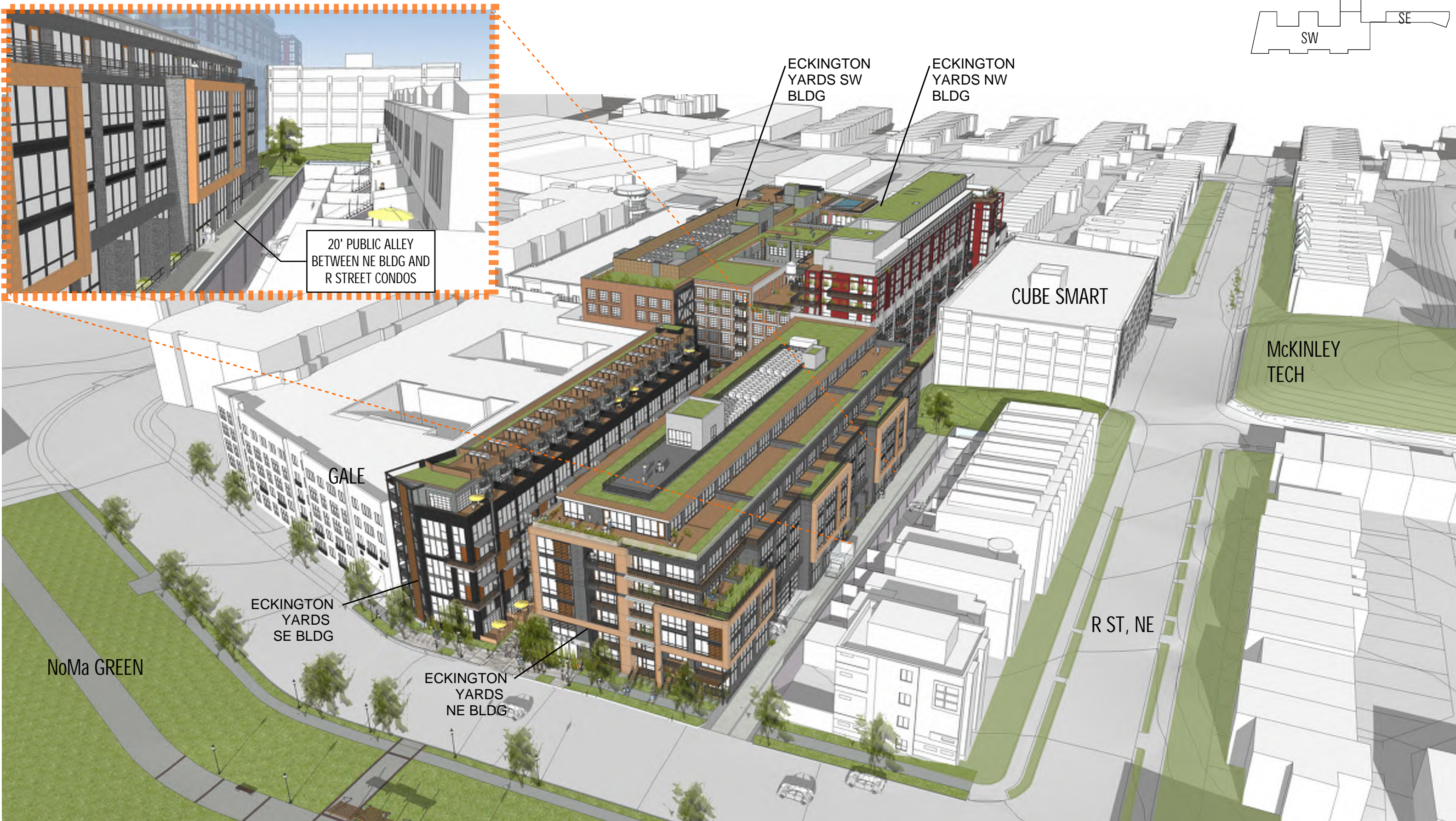
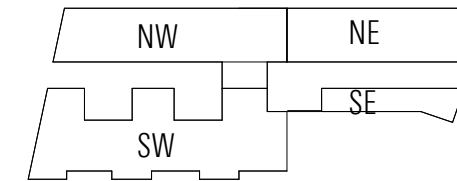
A2.14 | POST-HEARING SUBMISSION
06/02/2016

ECKINGTON YARDS | EAST + WEST
1611-1625 ECKINGTON PLACE + 1500 HARRY THOMAS WAY, NE WASHINGTON DC 20002

BOUNDARY COMPANIES + J B G
4445 WILLARD AVENUE, SUITE 400 BETHESDA MD 20815

LANDDESIGN, INC.
200 S. PEYTON STREET ALEXANDRIA, VA 22314

ERIC COLBERT & ASSOCIATES, P.C.
717 5TH STREET, NW WASHINGTON, DC 20001



20' PUBLIC ALLEY
BETWEEN NE BLDG AND
R STREET CONDOS

ECKINGTON
YARDS SW
BLDG

ECKINGTON
YARDS NW
BLDG

CUBE SMART

McKINLEY
TECH

GALE

ECKINGTON
YARDS
SE BLDG

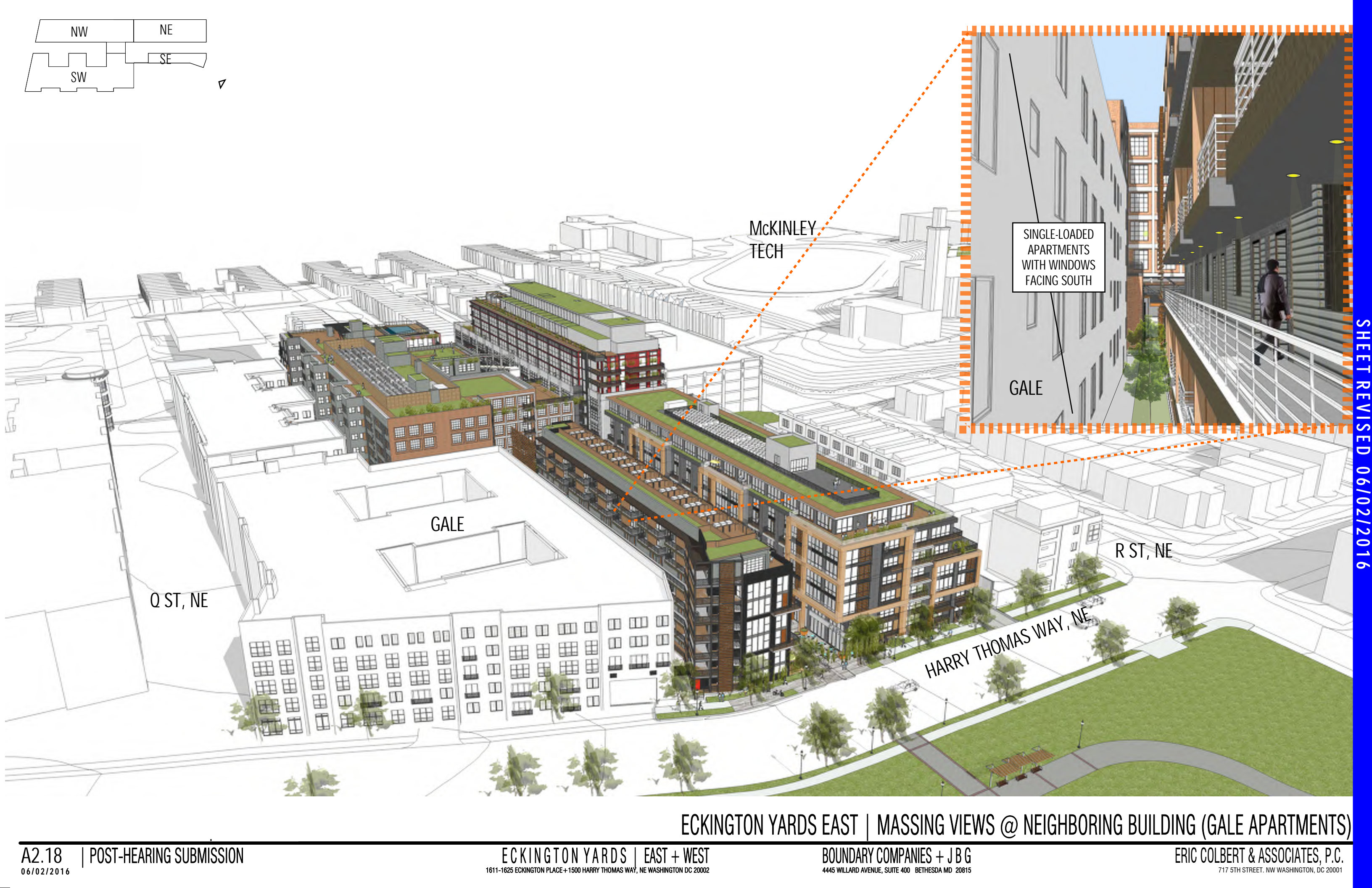
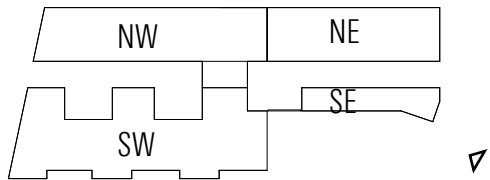
ECKINGTON
YARDS
NE BLDG

R ST, NE

NoMa GREEN

SHEET REVISED 06/02/2016

ECKINGTON YARDS EAST | MASSING VIEWS @ NEIGHBORING BUILDING (R STREET CONDOS)



McKINLEY
TECH

SINGLE-LOADED
APARTMENTS
WITH WINDOWS
FACING SOUTH

GALE

GALE

Q ST, NE

R ST, NE

HARRY THOMAS WAY, NE

ECKINGTON YARDS EAST | MASSING VIEWS @ NEIGHBORING BUILDING (GALE APARTMENTS)



25' X 50' (1250 SF)
MINIMUM
CLOSED COURT
AREA BY ZONE

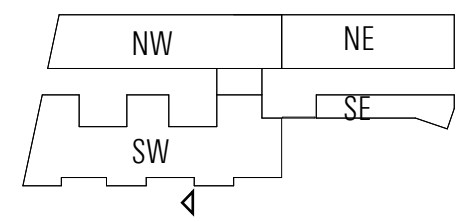
GALE APARTMENTS
NW BUILDING

ECKINGTON YARDS
SW BUILDING

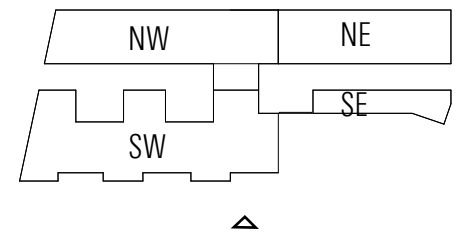
--- 25' X 50' AREA OVERLAY
(MIN. CLOSED COURT BY ZONE)
- - - VIEW FROM GALE 3RD
FLOOR WINDOW

FLOOR PLAN

← GALE | ECKINGTON YARDS →



COURTYARD VIEW FROM GALE APARTMENT WINDOW

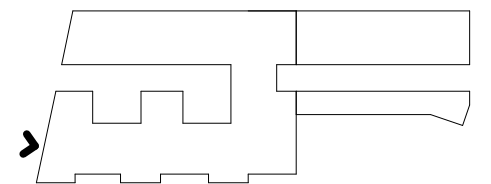


VIEW INTO SHARED PARKING RAMP FROM Q STREET, NE

ERIC COLBERT & ASSOCIATES, P.C.
717 5TH STREET, NW WASHINGTON, DC 20001

BOUNDARY COMPANIES + J B G
4445 WILLARD AVENUE, SUITE 400 BETHESDA MD 20815

ECKINGTON YARDS | EAST + WEST
1611-1625 ECKINGTON PLACE + 1500 HARRY THOMAS WAY, NE WASHINGTON DC 20002

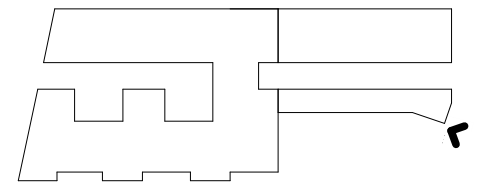


VIEW OF SHARED LOADING AREA AT ECKINGTON PLACE, NE

ERIC COLBERT & ASSOCIATES, P.C.
717 5TH STREET, NW WASHINGTON, DC 20001

BOUNDARY COMPANIES + J B G
4445 WILLARD AVENUE, SUITE 400 BETHESDA MD 20815

ECKINGTON YARDS | EAST + WEST
1611-1625 ECKINGTON PLACE + 1500 HARRY THOMAS WAY, NE WASHINGTON DC 20002



VIEW OF SHARED LOADING AREA AT HARRY THOMAS WAY, NE

ERIC COLBERT & ASSOCIATES, P.C.
717 5TH STREET, NW WASHINGTON, DC 20001

BOUNDARY COMPANIES + J B G
4445 WILLARD AVENUE, SUITE 400 BETHESDA MD 20815

ECKINGTON YARDS | EAST + WEST
1611-1625 ECKINGTON PLACE+1500 HARRY THOMAS WAY, NE WASHINGTON DC 20002